



LAMBERTSON INDUSTRIES

HOODS AND VENTILATION PRODUCT CATALOG 2009

DOWNLOAD UPDATE 11.30.09



LAMBERTSON INDUSTRIES • 1335 ALEXANDRIA COURT • SPARKS, NV 89434



PHONE: 775-857-1100 • FAX: 775-857-3289 • TOLL-FREE: 800-548-3324





CONTENTS

HOODS

U.L. BOX HOOD – 48" 1

U.L. BOX HOOD – 60" 1

NFPA BOX HOOD – 42" 1

U.L. MAKE-UP AIR HOOD – 48" 1

U.L. MAKE-UP AIR HOOD – 60" 1

NFPA MAKE-UP AIR HOOD – 42" 1

U.L. ANGLE FRONT HOOD – 48" 2

U.L. ANGLE FRONT HOOD – 60" 2

NFPA ANGLE FRONT HOOD – 42" 2

NFPA V-BANK HOODS – 42" 2

NFPA V-BANK HOODS – 48" 2

NFPA V-BANK HOODS – 60" 3

NFPA BACK SHELF VENTILATOR – 23" 3

NSF CLASS II – 36" 3

NSF CLASS II – 48" 3

NSF CLASS II – 60" 3

VENTILATION

EXHAUST FAN & CURB – UP-BLAST – Direct Drive – 1P 4

EXHAUST FAN & CURB – UP-BLAST – Belt Drive – 1P 4

EXHAUST FAN & CURB – UP-BLAST – Belt Drive – 3P 5

EXHAUST FAN & CURB – DOWN-BLAST – Direct Drive – 1P 5

EXHAUST FAN & CURB – DOWN-BLAST – Belt Drive – 1P 6

EXHAUST FAN & CURB – DOWN-BLAST – Belt Drive – 3P 6

EXHAUST FAN – IN-LINE – Direct Drive – 1P 7

EXHAUST FAN – IN-LINE – Belt Drive – 1P 7

EXHAUST FAN – IN-LINE – Belt Drive – 3P 7

SUPPLY FAN & CURB – FILTERED – 1P 7

SUPPLY FAN & CURB – FILTERED – 3P 8

SUPPLY FAN & CURB – HEATED – 1P 9

SUPPLY FAN & CURB – HEATED – 3P 10

SUPPLY FAN & CURB – EVAPORATIVE – 1P 10

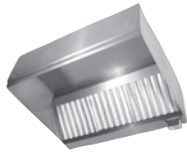
SUPPLY FAN & CURB – EVAPORATIVE – 3P 11

SUPPLY FAN & CURB – HEATED / EVAPORATIVE – 1P 12

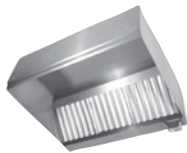
SUPPLY FAN & CURB – HEATED / EVAPORATIVE – 3P 13

ACCESSORIES 14

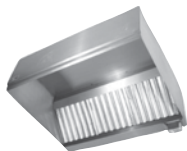



HOODS
U.L. BOX EXHAUST HOOD - 48"


MODEL	O.A.D.
UL-BH-48-4	48" x 48" x 21"
UL-BH-48-5	60" x 48" x 21"
UL-BH-48-6	72" x 48" x 21"
UL-BH-48-7	84" x 48" x 21"
UL-BH-48-8	96" x 48" x 21"
UL-BH-48-9	108" x 48" x 21"
UL-BH-48-10	120" x 48" x 21"
UL-BH-48-11	132" x 48" x 21"
UL-BH-48-12	144" x 48" x 21"
UL-BH-48-13	156" x 48" x 21"
UL-BH-48-14	168" x 48" x 21"
UL-BH-48-15	180" x 48" x 21"

U.L. BOX EXHAUST HOOD - 60"


MODEL	O.A.D.
UL-BH-60-4	48" x 60" x 21"
UL-BH-60-5	60" x 60" x 21"
UL-BH-60-6	72" x 60" x 21"
UL-BH-60-7	84" x 60" x 21"
UL-BH-60-8	96" x 60" x 21"
UL-BH-60-9	108" x 60" x 21"
UL-BH-60-10	120" x 60" x 21"
UL-BH-60-11	132" x 60" x 21"
UL-BH-60-12	144" x 60" x 21"
UL-BH-60-13	156" x 60" x 21"
UL-BH-60-14	168" x 60" x 21"
UL-BH-60-15	180" x 60" x 21"

NFPA BOX EXHAUST HOOD - 42"


MODEL	O.A.D.
NFPA-BH-42-4	48" x 42" x 21"
NFPA-BH-42-5	60" x 42" x 21"
NFPA-BH-42-6	72" x 42" x 21"
NFPA-BH-42-7	84" x 42" x 21"
NFPA-BH-42-8	96" x 42" x 21"

NFPA-BH-42-9	108" x 42" x 21"
NFPA-BH-42-10	120" x 42" x 21"
NFPA-BH-42-11	132" x 42" x 21"
NFPA-BH-42-12	144" x 42" x 21"
NFPA-BH-42-13	156" x 42" x 21"
NFPA-BH-42-14	168" x 42" x 21"
NFPA-BH-42-15	180" x 42" x 21"

U.L. MAKE-UP AIR BOX EXHAUST HOOD - 48"


MODEL	O.A.D.
UL-BH-MUA-48-4	48" x 48" x 21"
UL-BH-MUA-48-5	60" x 48" x 21"
UL-BH-MUA-48-6	72" x 48" x 21"
UL-BH-MUA-48-7	84" x 48" x 21"
UL-BH-MUA-48-8	96" x 48" x 21"
UL-BH-MUA-48-9	108" x 48" x 21"
UL-BH-MUA-48-10	120" x 48" x 21"
UL-BH-MUA-48-11	132" x 48" x 21"
UL-BH-MUA-48-12	144" x 48" x 21"
UL-BH-MUA-48-13	156" x 48" x 21"
UL-BH-MUA-48-14	168" x 48" x 21"
UL-BH-MUA-48-15	180" x 48" x 21"

U.L. MAKE-UP AIR BOX EXHAUST HOOD - 60"


MODEL	O.A.D.
UL-BH-MUA-60-4	48" x 60" x 21"
UL-BH-MUA-60-5	60" x 60" x 21"
UL-BH-MUA-60-6	72" x 60" x 21"
UL-BH-MUA-60-7	84" x 60" x 21"
UL-BH-MUA-60-8	96" x 60" x 21"
UL-BH-MUA-60-9	108" x 60" x 21"
UL-BH-MUA-60-10	120" x 60" x 21"
UL-BH-MUA-60-11	132" x 60" x 21"
UL-BH-MUA-60-12	144" x 60" x 21"
UL-BH-MUA-60-13	156" x 60" x 21"
UL-BH-MUA-60-14	168" x 60" x 21"
UL-BH-MUA-60-15	180" x 60" x 21"

NFPA MAKE-UP AIR BOX EXHAUST HOOD - 42"


MODEL	O.A.D.
NFPA-BH-MUA-42-4	48" x 42" x 21"
NFPA-BH-MUA-42-5	60" x 42" x 21"
NFPA-BH-MUA-42-6	72" x 42" x 21"
NFPA-BH-MUA-42-7	84" x 42" x 21"





NFPA-BH-MUA-42-8	96" x 42" x 21"
NFPA-BH-MUA-42-9	108" x 42" x 21"
NFPA-BH-MUA-42-10	120" x 42" x 21"
NFPA-BH-MUA-42-11	132" x 42" x 21"
NFPA-BH-MUA-42-12	144" x 42" x 21"
NFPA-BH-MUA-42-13	156" x 42" x 21"
NFPA-BH-MUA-42-14	168" x 42" x 21"
NFPA-BH-MUA-42-15	180" x 42" x 21"

U.L. ANGLE FRONT EXHAUST HOOD - 48"



MODEL	O.A.D.
UL-AF-48-4	48" x 48" x 21"
UL-AF-48-5	60" x 48" x 21"
UL-AF-48-6	72" x 48" x 21"
UL-AF-48-7	84" x 48" x 21"
UL-AF-48-8	96" x 48" x 21"
UL-AF-48-9	108" x 48" x 21"
UL-AF-48-10	120" x 48" x 21"
UL-AF-48-11	132" x 48" x 21"
UL-AF-48-12	144" x 48" x 21"
UL-AF-48-13	156" x 48" x 21"
UL-AF-48-14	168" x 48" x 21"
UL-AF-48-15	180" x 48" x 21"

U.L. ANGLE FRONT EXHAUST HOOD - 60"



MODEL	O.A.D.
UL-AF-60-4	48" x 60" x 21"
UL-AF-60-5	60" x 60" x 21"
UL-AF-60-6	72" x 60" x 21"
UL-AF-60-7	84" x 60" x 21"
UL-AF-60-8	96" x 60" x 21"
UL-AF-60-9	108" x 60" x 21"
UL-AF-60-10	120" x 60" x 21"
UL-AF-60-11	132" x 60" x 21"
UL-AF-60-12	144" x 60" x 21"
UL-AF-60-13	156" x 60" x 21"
UL-AF-60-14	168" x 60" x 21"
UL-AF-60-15	180" x 60" x 21"

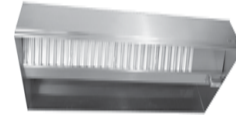
NFPA ANGLE FRONT EXHAUST HOOD - 42"



MODEL	O.A.D.
NFPA-AF-42-4	48" x 42" x 21"
NFPA-AF-42-5	60" x 42" x 21"
NFPA-AF-42-6	72" x 42" x 21"

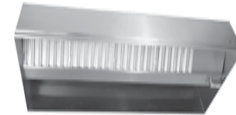
NFPA-AF-42-7	84" x 42" x 21"
NFPA-AF-42-8	96" x 42" x 21"
NFPA-AF-42-9	108" x 42" x 21"
NFPA-AF-42-10	120" x 42" x 21"
NFPA-AF-42-11	132" x 42" x 21"
NFPA-AF-42-12	144" x 42" x 21"
NFPA-AF-42-13	156" x 42" x 21"
NFPA-AF-42-14	168" x 42" x 21"
NFPA-AF-42-15	180" x 42" x 21"

NFPA V-BANK EXHAUST HOOD - 42"



MODEL	O.A.D.
NFPA-VB-42-4	48" x 42" x 21"
NFPA-VB-42-5	60" x 42" x 21"
NFPA-VB-42-6	72" x 42" x 21"
NFPA-VB-42-7	84" x 42" x 21"
NFPA-VB-42-8	96" x 42" x 21"
NFPA-VB-42-9	108" x 42" x 21"
NFPA-VB-42-10	120" x 42" x 21"
NFPA-VB-42-11	132" x 42" x 21"
NFPA-VB-42-12	144" x 42" x 21"
NFPA-VB-42-13	156" x 42" x 21"
NFPA-VB-42-14	168" x 42" x 21"
NFPA-VB-42-15	180" x 42" x 21"

NFPA V-BANK EXHAUST HOOD - 48"

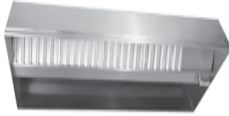


MODEL	O.A.D.
NFPA-VB-48-4	48" x 48" x 21"
NFPA-VB-48-5	60" x 48" x 21"
NFPA-VB-48-6	72" x 48" x 21"
NFPA-VB-48-7	84" x 48" x 21"
NFPA-VB-48-8	96" x 48" x 21"
NFPA-VB-48-9	108" x 48" x 21"
NFPA-VB-48-10	120" x 48" x 21"
NFPA-VB-48-11	132" x 48" x 21"
NFPA-VB-48-12	144" x 48" x 21"
NFPA-VB-48-13	156" x 48" x 21"
NFPA-VB-48-14	168" x 48" x 21"
NFPA-VB-48-15	180" x 48" x 21"





NFPA V-BANK EXHAUST HOOD - 60"



MODEL	O.A.D.
NFPA-VB-60-4	48" x 60" x 21"
NFPA-VB-60-5	60" x 60" x 21"
NFPA-VB-60-6	72" x 60" x 21"
NFPA-VB-60-7	84" x 60" x 21"
NFPA-VB-60-8	96" x 60" x 21"
NFPA-VB-60-9	108" x 60" x 21"
NFPA-VB-60-10	120" x 60" x 21"
NFPA-VB-60-11	132" x 60" x 21"
NFPA-VB-60-12	144" x 60" x 21"
NFPA-VB-60-13	156" x 60" x 21"
NFPA-VB-60-14	168" x 60" x 21"
NFPA-VB-60-15	180" x 60" x 21"

NFPA BACK SHELF VENTILATOR EXHAUST HOOD



MODEL	O.A.D.
NFPA-BSV-4	48" x 23" x 36"
NFPA-BSV-5	60" x 23" x 36"
NFPA-BSV-6	72" x 23" x 36"
NFPA-BSV-7	84" x 23" x 36"
NFPA-BSV-8	96" x 23" x 36"
NFPA-BSV-9	108" x 23" x 36"
NFPA-BSV-10	120" x 23" x 36"
NFPA-BSV-11	132" x 23" x 36"
NFPA-BSV-12	144" x 23" x 36"

CLASS II VAPOR HOOD - 36"



MODEL	O.A.D.
HWM-VH-36-36	36" x 36" x 18"
HWM-VH-36-42	42" x 36" x 18"
HWM-VH-36-48	48" x 36" x 18"
HWM-VH-36-54	54" x 36" x 18"
HWM-VH-36-60	60" x 36" x 18"
HWM-VH-36-66	66" x 36" x 18"
HWM-VH-36-72	72" x 36" x 18"
HWM-VH-36-78	78" x 36" x 18"
HWM-VH-36-84	84" x 36" x 18"
HWM-VH-36-90	90" x 36" x 18"

HWM-VH-36-96	96" x 36" x 18"
HWM-VH-36-102	102" x 36" x 18"
HWM-VH-36-108	108" x 36" x 18"
HWM-VH-36-114	114" x 36" x 18"
HWM-VH-36-120	120" x 36" x 18"

CLASS II VAPOR HOOD - 48"



MODEL	O.A.D.
HWM-VH-48-42	42" x 48" x 18"
HWM-VH-48-48	48" x 48" x 18"
HWM-VH-48-54	54" x 48" x 18"
HWM-VH-48-60	60" x 48" x 18"
HWM-VH-48-66	66" x 48" x 18"
HWM-VH-48-72	72" x 48" x 18"
HWM-VH-48-78	78" x 48" x 18"
HWM-VH-48-84	84" x 48" x 18"
HWM-VH-48-90	90" x 48" x 18"
HWM-VH-48-96	96" x 48" x 18"
HWM-VH-48-102	102" x 48" x 18"
HWM-VH-48-108	108" x 48" x 18"
HWM-VH-48-114	114" x 48" x 18"
HWM-VH-48-120	120" x 48" x 18"

CLASS II VAPOR HOOD - 60"



MODEL	O.A.D.
HWM-VH-60-42	42" x 60" x 18"
HWM-VH-60-48	48" x 60" x 18"
HWM-VH-60-54	54" x 60" x 18"
HWM-VH-60-60	60" x 60" x 18"
HWM-VH-60-66	66" x 60" x 18"
HWM-VH-60-72	72" x 60" x 18"
HWM-VH-60-78	78" x 60" x 18"
HWM-VH-60-84	84" x 60" x 18"
HWM-VH-60-90	90" x 60" x 18"
HWM-VH-60-96	96" x 60" x 18"
HWM-VH-60-102	102" x 60" x 18"
HWM-VH-60-108	108" x 60" x 18"
HWM-VH-60-114	114" x 60" x 18"
HWM-VH-60-120	120" x 60" x 18"





VENTILATION

DIRECT DRIVE UPBLAST 1P - EXHAUST FAN



MODEL	CFM
LI-1-DD-33H	750
LI-2-DD-50H	900
LI-3-DD-50H	1050
LI-4-DD-50H	1100
LI-5-DD-50H	1125
LI-6-DD-50H	1250
LI-7-DD-50H	1350
LI-8-DD-50H	1450
LI-9-DD-75H	1575
LI-10-DD-75H	1650
LI-11-DD-75H	1713
LI-12-DD-85H	1800
LI-13-DD-85H	1850
LI-14-DD-85H	2025
LI-15-DD-85H	2050
LI-16-DD-85H	2091
LI-17-DD-85H	2250
LI-18-DD-85H	2320

CURB - DIRECT DRIVE UPBLAST 1P - EXHAUST FAN



MODEL
LI-C1-1DD
LI-C2-1DD
LI-C3-1DD
LI-C4-1DD
LI-C5-1DD
LI-C6-1DD
LI-C7-1DD
LI-C8-1DD
LI-C19-1DD
LI-C10-1DD
LI-C11-1DD
LI-C12-1DD
LI-C13-1DD
LI-C14-1DD
LI-C15-1DD
LI-C16-1DD
LI-C17-1DD
LI-C18-1DD

BELT DRIVE UPBLAST 1P - EXHAUST FAN



MODEL	CFM
LI-1-UB18-1	2450
LI-2-UB18-1	2475
LI-3-UB18-1	2650
LI-4-UB18-1	2700
LI-5-UB18-1	2798
LI-6-UB18-1	2850
LI-7-UB18-1	2925
LI-8-UB18-1	3000
LI-9-UB18-1	3150
LI-10-UB18-1	3242
LI-11-UB18-1	3375
LI-12-UB18-1	3600
LI-13-UB18-1	3756
LI-14-UB20-1	3922
LI-15-UB20-1	4900
LI-16-UB20-1	4206
LI-17-UB20-1	4400
LI-18-UB20-1	4600
LI-19-UB20-1	4800
LI-20-UB20-1	5042
LI-21-UB20-1	5632
LI-22-UB24-1	6294
LI-23-UB24-1	6541

CURB - BELT DRIVE UPBLAST 1P - EXHAUST FAN



MODEL
LI-C1-1E
LI-C2-1E
LI-C3-1E
LI-C4-1E
LI-C5-1E
LI-C6-1E
LI-C7-1E
LI-C8-1E
LI-C9-1E
LI-C10-1E
LI-C11-1E
LI-C12-1E
LI-C13-1E
LI-C14-1E
LI-C15-1E
LI-C16-1E
LI-C17-1E
LI-C18-1E
LI-C19-1E
LI-C20-1E





LI-C21-1E
LI-C22-1E
LI-C23-1E

BELT DRIVE UPBLAST 3P - EXHAUST FAN



MODEL	CFM
LI-1-UB18-3	2450
LI-2-UB18-3	2475
LI-3-UB18-3	2650
LI-4-UB18-3	2700
LI-5-UB18-3	2798
LI-6-UB18-3	2850
LI-7-UB18-3	2925
LI-8-UB18-3	3000
LI-9-UB18-3	3150
LI-10-UB18-3	3242
LI-11-UB18-3	3375
LI-12-UB18-3	3600
LI-13-UB18-3	3756
LI-14-UB20-3	3922
LI-15-UB20-3	4000
LI-16-UB20-3	4206
LI-17-UB20-3	4400
LI-18-UB20-3	4600
LI-19-UB20-3	4800
LI-20-UB20-3	5042
LI-21-UB20-3	5632
LI-22-UB24-3	6294
LI-23-UB24-3	6541

CURB - BELT DRIVE UPBLAST 3P - EXHAUST FAN



MODEL

LI-C1-3E
LI-C2-3E
LI-C3-3E
LI-C4-3E
LI-C5-3E
LI-C6-3E
LI-C7-3E
LI-C8-3E
LI-C9-3E
LI-C10-3E
LI-C11-3E
LI-C12-3E
LI-C13-3E
LI-C14-3E
LI-C15-3E
LI-C16-3E

LI-C17-3E
LI-C18-3E
LI-C19-3E
LI-C20-3E
LI-C21-3E
LI-C22-3E
LI-C23-3E

EXHAUST — DOWNBLAST DIRECT DRIVE 1P

MODEL	CFM
LI-1-DB-33H	750
LI-2-DB-50H	900
LI-3-DB-50H	1050
LI-4-DB-50H	1100
LI-5-DB-50H	1125
LI-6-DB-50H	1250
LI-7-DB-50H	1350
LI-8-DB-50H	1450
LI-9-DB-50H	1575
LI-10-DB-50H	1650
LI-11-DB-75H	1713
LI-12-DB-75H	1800
LI-13-DB-85H	1850
LI-14-DB-85H	2025
LI-15-DB-85H	2050
LI-16-DB-85H	2091
LI-17-DB-85H	2250
LI-18-DB-85H	2320

CURB EXHAUST — DOWNBLAST DIRECT DRIVE - 1P



MODEL

LI-C1-1DB
LI-C2-1DB
LI-C3-1DB
LI-C4-1DB
LI-C5-1DB
LI-C6-1DB
LI-C7-1DB
LI-C8-1DB
LI-C9-1DB
LI-C10-1DB
LI-C11-1DB
LI-C12-1DB
LI-C13-1DB
LI-C14-1DB
LI-C15-1DB
LI-C16-1DB
LI-C17-1DB
LI-C18-1DB





EXHAUST — DOWNBLAST BELT DRIVE - 1P

MODEL	CFM
LI-19-DB18-1	2450
LI-20-DB18-1	2475
LI-21-DB18-1	2650
LI-22-DB18-1	2700
LI-23-DB18-1	2798
LI-24-DB18-1	2850
LI-25-DB18-1	2925
LI-26-DB18-1	3000
LI-27-DB18-1	3150
LI-28-DB20-1	3242
LI-29-DB20-1	3375
LI-30-DB20-1	3600
LI-31-DB20-1	3756
LI-32-DB20-1	3922
LI-33-DB20-1	4000
LI-34-DB20-1	4206
LI-35-DB20-1	4400
LI-36-DB24-1	4600
LI-37-DB24-1	4800
LI-38-DB24-1	5042
LI-39-DB24-1	5632
LI-40-DB24-1	6294
LI-41-DB30-1	6541

CURB EXHAUST — DOWNBLAST BELT DRIVE - 1P



MODEL

LI-C19-1DB
LI-C20-1DB
LI-C21-1DB
LI-C22-1DB
LI-C23-1DB
LI-C24-1DB
LI-C25-1DB
LI-C26-1DB
LI-C27-1DB
LI-C28-1DB
LI-C29-1DB
LI-C30-1DB
LI-C31-1DB
LI-C32-1DB
LI-C33-1DB
LI-C34-1DB
LI-C35-1DB
LI-C36-1DB
LI-C37-1DB

LI-C38-1DB

LI-C39-1DB

LI-C40-1DB

LI-C41-1DB

EXHAUST — DOWNBLAST BELT DRIVE - 3P

MODEL	CFM
LI-1-DB18-3	2450
LI-2-DB18-3	2475
LI-3-DB18-3	2650
LI-4-DB18-3	2700
LI-5-DB18-3	2798
LI-6-DB18-3	2850
LI-7-DB18-3	2925
LI-8-DB18-3	3000
LI-9-DB18-3	3150
LI-10-DB20-3	3242
LI-11-DB20-3	3375
LI-12-DB20-3	3600
LI-13-DB20-3	3756
LI-14-DB20-3	3922
LI-15-DB20-3	4000
LI-16-DB20-3	4206
LI-17-DB20-3	4400
LI-18-DB24-3	4600
LI-19-DB24-3	4800
LI-20-DB24-3	5042
LI-21-DB24-3	5632
LI-22-DB24-3	6294
LI-23-DB30-2	6541

CURB EXHAUST — DOWNBLAST BELT DRIVE - 3P



MODEL

LI-C1-3DB
LI-C2-3DB
LI-C3-3DB
LI-C4-3DB
LI-C5-3DB
LI-C6-3DB
LI-C7-3DB
LI-C8-3DB
LI-C9-3DB
LI-C10-3DB
LI-C11-3DB
LI-C12-3DB
LI-C13-3DB
LI-C14-3DB
LI-C15-3DB
LI-C16-3DB





LI-C17-3DB
LI-C18-3DB
LI-C19-3DB
LI-C20-3DB
LI-C21-3DB
LI-C22-3DB
LI-C23-3DB

EXHAUST — IN-LINE DIRECT DRIVE - 1P

MODEL	CFM
LI-1-ISQ13-1	750
LI-2-ISQ13-1	900
LI-3-ISQ13-1	1050
LI-4-ISQ13-1	1100
LI-5-ISQ13-1	1125
LI-6-ISQ13-1	1250
LI-7-ISQ13-1	1350
LI-8-ISQ13-1	1450
LI-9-ISQ13-1	1575
LI-10-ISQ13-1	1650
LI-11-ISQ13-1	1713
LI-12-ISQ13-1	1800
LI-13-ISQ13-1	1850

EXHAUST — IN-LINE BELT DRIVE - 1P

MODEL	CFM
LI-14-ISQB15-1	2025
LI-15-ISQB15-1	2050
LI-16-ISQB15-1	2091
LI-17-ISQB16-1	2250
LI-18-ISQB16-1	2320
LI-19-ISQB16-1	2450
LI-20-ISQB16-1	2475
LI-21-ISQB18-1	2650
LI-22-ISQB18-1	2700
LI-23-ISQB18-1	2798
LI-24-ISQB18-1	2850
LI-25-ISQB18-1	2925
LI-26-ISQB18-1	3000
LI-27-ISQB18-1	3150
LI-28-ISQB18-1	3242
LI-29-ISQB22-1	3375
LI-30-ISQB22-1	3600
LI-31-ISQB22-1	3756
LI-32-ISQB22-1	3922
LI-33-ISQB22-1	4000
LI-34-ISQB22-1	4206
LI-35-ISQB22-1	4400
LI-36-ISQB22-1	4600
LI-37-ISQB22-1	4800
LI-38-ISQB22-1	5042

LI-39-ISQB24-1	5632
LI-40-ISQB24-1	6294
LI-41-ISQB24-1	6541

EXHAUST — IN-LINE BELT DRIVE - 3P

MODEL	CFM
LI-1-ISQB15-3	2025
LI-2-ISQB15-3	2050
LI-3-ISQB15-3	2091
LI-4-ISQB16-3	2250
LI-5-ISQB16-3	2320
LI-6-ISQB16-3	2450
LI-7-ISQB16-3	2475
LI-8-ISQB18-3	2650
LI-9-ISQB18-3	2700
LI-10-ISQB18-3	2798
LI-11-ISQB18-3	2850
LI-12-ISQB18-3	2925
LI-13-ISQB18-3	3000
LI-14-ISQB18-3	3150
LI-15-ISQB18-3	3242
LI-16-ISQB22-3	3375
LI-17-ISQB22-3	3600
LI-18-ISQB22-3	3756
LI-19-ISQB22-3	3922
LI-20-ISQB22-3	4000
LI-21-ISQB22-3	4206
LI-22-ISQB22-3	4400
LI-23-ISQB22-3	4600
LI-24-ISQB22-3	4800
LI-25-ISQB22-3	5042
LI-26-ISQB24-3	5632
LI-27-ISQB24-3	6294
LI-28-ISQB24-3	6541

SUPPLY FAN - FILTERED 1P

MODEL	CFM
LI-1-SA10-1	750
LI-2-SA10-1	900
LI-3-SA10-1	1050
LI-4-SA10-1	1100
LI-5-SA10-1	1125
LI-6-SA10-1	1250
LI-7-SA10-1	1350
LI-8-SA10-1	1450
LI-9-SA10-1	1575
LI-10-SA10-1	1650
LI-11-SA10-1	1713





LI-12-SA10-1	1800
LI-13-SA10-1	1850
LI-14-SA10-1	2025
LI-15-SA10-1	2050
LI-16-SA10-1	2091
LI-17-SA10-1	2250
LI-18-SA10-1	2320
LI-19-SA10-1	2450
LI-20-SA10-1	2475
LI-21-SA12-1	2650
LI-22-SA12-1	2700
LI-23-SA12-1	2798
LI-24-SA12-1	2850
LI-25-SA12-1	2925
LI-26-SA12-1	3000
LI-27-SA12-1	3150
LI-28-SA12-1	3242
LI-29-SA12-1	3375
LI-30-SA12-1	3600
LI-31-SA12-1	3756
LI-32-SA12-1	4000
LI-33-SA12-1	4206
LI-34-SA12-1	4400
LI-35-SA15-1	4600
LI-36-SA15-1	4800

CURB SUPPLY FAN - FILTERED 1P



MODEL

LI-C1-1S
LI-C2-1S
LI-C3-1S
LI-C4-1S
LI-C5-1S
LI-C6-1S
LI-C7-1S
LI-C8-1S
LI-C9-1S
LI-C10-1S
LI-C11-1S
LI-C12-1S
LI-C13-1S
LI-C14-1S
LI-C15-1S
LI-C16-1S
LI-C17-1S
LI-C18-1S
LI-C19-1S
LI-C20-1S
LI-C21-1S
LI-C22-1S
LI-C23-1S
LI-C24-1S
LI-C25-1S

LI-C26-1S
LI-C27-1S
LI-C28-1S
LI-C29-1S
LI-C30-1S
LI-C31-1S
LI-C32-1S
LI-C33-1S
LI-C34-1S
LI-C35-1S
LI-C36-1S

SUPPLY FAN - FILTERED 3P



MODEL

CFM

LI-1-SA10-3	1575
LI-2-SA10-3	1650
LI-3-SA10-3	1713
LI-4-SA10-3	1800
LI-5-SA10-3	1850
LI-6-SA10-3	2025
LI-7-SA10-3	2050
LI-8-SA10-3	2091
LI-9-SA10-3	2250
LI-10-SA10-3	2320
LI-11-SA10-3	2450
LI-12-SA10-3	2475
LI-13-SA10-3	2650
LI-14-SA10-3	2700
LI-15-SA10-3	2798
LI-16-SA10-3	2850
LI-17-SA10-3	2925
LI-18-SA10-3	3000
LI-19-SA10-3	2150
LI-20-SA10-3	3242
LI-21-SA12-3	3375
LI-22-SA12-3	3600
LI-23-SA12-3	3756
LI-24-SA12-3	3922
LI-25-SA12-3	4000
LI-26-SA12-3	4206
LI-27-SA12-3	4400
LI-28-SA12-3	4600
LI-29-SA12-3	4800

CURB SUPPLY FAN - FILTERED 3P



MODEL

LI-C1-3S
LI-C2-3S





LI-C3-3S
LI-C4-3S
LI-C5-3S
LI-C6-3S
LI-C7-3S
LI-C8-3S
LI-C9-3S
LI-C10-3S
LI-C11-3S
LI-C12-3S
LI-C13-3S
LI-C14-3S
LI-C15-3S
LI-C16-3S
LI-C17-3S
LI-C18-3S
LI-C19-3S
LI-C20-3S
LI-C21-3S
LI-C22-3S
LI-C23-3S
LI-C24-3S
LI-C25-3S
LI-C26-3S
LI-C27-3S
LI-C28-3S
LI-C29-1S

HEATED SUPPLY FAN 1P



MODEL	CFM
LI-1-76H-1	750
LI-2-76H-1	900
LI-3-76H-1	1050
LI-4-76H-1	1100
LI-5-76H-1	1125
LI-6-76H-1	1250
LI-7-76H-1	1350
LI-8-76H-1	1450
LI-9-G10H-1	1575
LI-10-G10H-1	1650
LI-11-G10H-1	1713
LI-12-G10H-1	1800
LI-13-G10H-1	1850
LI-14-G10H-1	2025
LI-15-G10H-1	2050
LI-16-G10H-1	2091
LI-17-G10H-1	2250
LI-18-G10H-1	2320
LI-19-G10H-1	2450
LI-20-G10H-1	2475

LI-21-G10H-1	2650
LI-22-G10H-1	2700
LI-23-G10H-1	2798
LI-24-G10H-1	2850
LI-25-G15H-1	2925
LI-26-G15H-1	3000
LI-27-G15H-1	3150
LI-28-G15H-1	3242
LI-29-G15H-1	3375
LI-30-G15H-1	3600
LI-31-G15H-1	3756
LI-32-G18H-1	3922
LI-33-G18H-1	4900
LI-34-G18H-1	4206
LI-35-G18H-1	4400
LI-36-G18H-1	4600
LI-37-G18H-1	4800

CURB HEATED SUPPLY FAN 1P



MODEL

LI-C1-1H
LI-C2-1H
LI-C3-1H
LI-C4-1H
LI-C5-1H
LI-C6-1H
LI-C7-1H
LI-C8-1H
LI-C9-1H
LI-C10-1H
LI-C11-1H
LI-C12-1H
LI-C13-1H
LI-C14-1H
LI-C15-1H
LI-C16-1H
LI-C17-1H
LI-C18-1H
LI-C19-1H
LI-C20-1H
LI-C21-1H
LI-C22-1H
LI-C23-1H
LI-C24-1H
LI-C25-1H
LI-C26-1H
LI-C27-1H
LI-C28-1H
LI-C29-1H
LI-C30-1H





- LI-C31-1H
- LI-C32-1H
- LI-C33-1H
- LI-C34-1H
- LI-C35-1H
- LI-C36-1H
- LI-C37-1H

HEATED SUPPLY FAN 3P



MODEL	CFM
LI-1-76H-3	750
LI-2-76H-3	900
LI-3-76H-3	1050
LI-4-76H-3	1100
LI-5-76H-3	1125
LI-6-76H-3	1250
LI-7-76H-3	1350
LI-8-76H-3	1450
LI-9-G10H-3	1575
LI-10-G10H-3	1650
LI-11-G10H-3	1713
LI-12-G10H-3	1800
LI-13-G10H-3	1850
LI-14-G10H-3	2025
LI-15-G10H-3	2050
LI-16-G10H-3	2091
LI-17-G10H-3	2250
LI-18-G10H-3	2320
LI-19-G10H-3	2450
LI-20-G10H-3	2475
LI-21-G10H-3	2650
LI-22-G10H-3	2700
LI-23-G10H-3	2798
LI-24-G10H-3	2850
LI-25-G15H-3	2925
LI-26-G15H-3	3000
LI-27-G15H-3	3150
LI-28-G15H-3	3242
LI-29-G15H-3	3375
LI-30-G15H-3	3600
LI-31-G15H-3	3756
LI-32-G18H-3	3922
LI-33-G18H-3	4000
LI-34-G18H-3	4206
LI-35-G18H-3	4400
LI-36-G18H-3	4600
LI-37-G18H-3	4800

CURB HEATED SUPPLY FAN 3P



MODEL

LI-C1-3H
LI-C2-3H
LI-C3-3H
LI-C4-3H
LI-C5-3H
LI-C6-3H
LI-C7-3H
LI-C8-3H
LI-C9-3H
LI-C10-3H
LI-C11-3H
LI-C12-3H
LI-C13-3H
LI-C14-3H
LI-C15-3H
LI-C16-3H
LI-C17-3H
LI-C18-3H
LI-C19-3H
LI-C20-3H
LI-C21-3H
LI-C22-3H
LI-C23-3H
LI-C24-3H
LI-C25-3H
LI-C26-3H
LI-C27-3H
LI-C28-3H
LI-C29-3H
LI-C30-3H
LI-C31-3H
LI-C32-3H
LI-C33-3H
LI-C34-3H
LI-C35-3H
LI-C36-3H
LI-C37-3H

SUPPLY EVAPORATIVE 1P

MODEL	CFM
LI-1-SA10E-1	700
LI-2-SA10E-1	900
LI-3-SA10E-1	1050
LI-4-SA10E-1	1100
LI-5-SA10E-1	1125
LI-6-SA10E-1	1250
LI-7-SA10E-1	1350
LI-8-SA10E-1	1450
LI-9-SA10E-1	1575
LI-10-SA10E-1	1650





LI-11-SA10E-1	1713
LI-12-SA10E-1	1800
LI-13-SA10E-1	1850
LI-14-SA10E-1	2025
LI-15-SA10E-1	2050
LI-16-SA10E-1	2091
LI-17-SA10E-1	2250
LI-18-SA10E-1	2320
LI-19-SA10E-1	2450
LI-20-SA12E-1	2475
LI-21-SA12E-1	2650
LI-22-SA12E-1	2700
LI-23-SA12E-1	2798
LI-24-SA12E-1	2850
LI-25-SA12E-1	2925
LI-26-SA12E-1	3000
LI-27-SA12E-1	3150
LI-28-SA12E-1	3242
LI-29-SA12E-1	3375
LI-30-SA12E-1	3600
LI-31-SA15E-1	3756
LI-32-SA15E-1	3922
LI-33-SA15E-1	4000
LI-34-SA15E-1	4206
LI-35-SA15E-1	4400
LI-36-SA15E-1	4600
LI-37-SA18E-1	4800

CURB SUPPLY EVAPORATIVE 1P



MODEL

LI-C1-1SE
LI-C2-1SE
LI-C3-1SE
LI-C4-1SE
LI-C5-1SE
LI-C6-1SE
LI-C7-1SE
LI-C8-1SE
LI-C9-1SE
LI-C10-1SE
LI-C11-1SE
LI-C12-1SE
LI-C13-1SE
LI-C14-1SE
LI-C15-1SE
LI-C16-1SE
LI-C17-1SE
LI-C18-1SE
LI-C19-1SE
LI-C20-1SE
LI-C21-1SE

LI-C22-1SE
LI-C23-1SE
LI-C24-1SE
LI-C25-1SE
LI-C26-1SE
LI-C27-1SE
LI-C28-1SE
LI-C29-1SE
LI-C30-1SE
LI-C31-1SE
LI-C32-1SE
LI-C33-1SE
LI-C34-1SE
LI-C35-1SE
LI-C36-1SE
LI-C37-1SE

SUPPLY EVAPORATIVE 3P

MODEL	CFM
LI-1-SA10E-3	900
LI-2-SA10E-3	1050
LI-3-SA10E-3	1100
LI-4-SA10E-3	1125
LI-5-SA10E-3	1250
LI-6-SA10E-3	1350
LI-7-SA10E-3	1450
LI-8-SA10E-3	1575
LI-9-SA10E-3	1650
LI-10-SA10E-3	1713
LI-11-SA10E-3	1800
LI-12-SA10E-3	1850
LI-13-SA10E-3	2025
LI-14-SA10E-3	2050
LI-15-SA10E-3	2091
LI-16-SA10E-3	2250
LI-17-SA10E-3	2320
LI-18-SA12E-3	2450
LI-19-SA12E-3	2475
LI-20-SA12E-3	2650
LI-21-SA12E-3	2700
LI-22-SA12E-3	2798
LI-23-SA12E-3	2850
LI-24-SA12E-3	2925
LI-25-SA12E-3	3000
LI-26-SA12E-3	3150
LI-27-SA12E-3	3242
LI-28-SA12E-3	3375
LI-29-SA12E-3	3600
LI-30-SA15E-3	3756
LI-31-SA15E-3	3922
LI-32-SA15E-3	4000
LI-33-SA15E-3	4206
LI-34-SA15E-3	4400





LI-35-SA15E-3	4600
LI-36-SA18E-3	4800

CURB SUPPLY EVAPORATIVE 3P

MODEL	
LI-C1-3SE	
LI-C2-3SE	
LI-C3-3SE	
LI-C4-3SE	
LI-C5-3SE	
LI-C6-3SE	
LI-C7-3SE	
LI-C8-3SE	
LI-C9-3SE	
LI-C10-3SE	
LI-C11-3SE	
LI-C12-3SE	
LI-C13-3SE	
LI-C14-3SE	
LI-C15-3SE	
LI-C16-3SE	
LI-C17-3SE	
LI-C18-3SE	
LI-C19-3SE	
LI-C20-3SE	
LI-C21-3SE	
LI-C22-3SE	
LI-C23-3SE	
LI-C24-3SE	
LI-C25-3SE	
LI-C26-3SE	
LI-C27-3SE	
LI-C28-3SE	
LI-C29-3SE	
LI-C30-3SE	
LI-C31-3SE	
LI-C32-3SE	
LI-C33-3SE	
LI-C34-3SE	
LI-C35-3SE	
LI-C36-3SE	

SUPPLY - HEATED / EVAPORATIVE 1P



MODEL	CFM
LI-1-G10HE-1	1050
LI-2-G10HE-1	1100
LI-3-G10HE-1	1125
LI-4-G10HE-1	1250
LI-5-G10HE-1	1350
LI-6-G10HE-1	1450
LI-7-G10HE-1	1575
LI-8-G10HE-1	1650

LI-9-G10HE-1	1713
LI-10-G10HE-1	1800
LI-11-G10HE-1	1850
LI-12-G10HE-1	2025
LI-13-G10HE-1	2050
LI-14-G10HE-1	2091
LI-15-G10HE-1	2250
LI-16-G10HE-1	2320
LI-17-G10HE-1	2450
LI-18-G10HE-1	2475
LI-19-G10HE-1	2650
LI-20-G10HE-1	2700
LI-21-G10HE-1	2798
LI-22-G10HE-1	2850
LI-23-G10HE-1	2925
LI-24-G15HE-1	3000
LI-25-G15HE-1	3150
LI-26-G15HE-1	3242
LI-27-G15HE-1	3375
LI-28-G15HE-1	3600
LI-29-G18HE-1	3756
LI-30-G18HE-1	3922
LI-31-G18HE-1	4900
LI-32-G18HE-1	4206
LI-33-G18HE-1	4400
LI-34-G18HE-1	4600
LI-35-G18HE-1	4800

CURB - SUPPLY - HEATED / EVAPORATIVE 1P



MODEL	
LI-C1-1HE	
LI-C2-1HE	
LI-C3-1HE	
LI-C4-1HE	
LI-C5-1HE	
LI-C6-1HE	
LI-C7-1HE	
LI-C8-1HE	
LI-C9-1HE	
LI-C10-1HE	
LI-C11-1HE	
LI-C12-1HE	
LI-C13-1HE	
LI-C14-1HE	
LI-C15-1HE	
LI-C16-1HE	
LI-C17-1HE	
LI-C18-1HE	
LI-C19-1HE	
LI-C20-1HE	





LI-C21-1HE
LI-C22-1HE
LI-C23-1HE
LI-C24-1HE
LI-C25-1HE
LI-C26-1HE
LI-C27-1HE
LI-C28-1HE
LI-C29-1HE
LI-C30-1HE
LI-C31-1HE
LI-C32-1HE
LI-C33-1HE
LI-C34-1HE
LI-C35-1HE

SUPPLY - HEATED / EVAPORATIVE 3P



MODEL	CFM
LI-1-G10HE-3	1050
LI-2-G10HE-3	1100
LI-3-G10HE-3	1125
LI-4-G10HE-3	1250
LI-5-G10HE-3	1350
LI-6-G10HE-3	1450
LI-7-G10HE-3	1575
LI-8-G10HE-3	1650
LI-9-G10HE-3	1713
LI-10-G10HE-3	1800
LI-11-G10HE-3	1850
LI-12-G10HE-3	2025
LI-13-G10HE-3	2050
LI-14-G10HE-3	2091
LI-15-G10HE-3	2250
LI-16-G10HE-3	2320
LI-17-G10HE-3	2450
LI-18-G10HE-3	2475
LI-19-G10HE-3	2650
LI-20-G10HE-3	2700
LI-21-G10HE-3	2798
LI-22-G10HE-3	2850
LI-23-G10HE-3	2925
LI-24-G15HE-3	3000
LI-25-G15HE-3	3150
LI-26-G15HE-3	3242
LI-27-G15HE-3	3375
LI-28-G15HE-3	3600
LI-29-G18HE-3	3756
LI-30-G18HE-3	3922
LI-31-G18HE-3	4000
LI-32-G18HE-3	4206
LI-33-G18HE-3	4400
LI-34-G18HE-3	4600
LI-35-G18HE-3	4800

CURB - SUPPLY - HEATED / EVAPORATIVE 3P



MODEL
LI-C1-3HE
LI-C2-3HE
LI-C3-3HE
LI-C4-3HE
LI-C5-3HE
LI-C6-3HE
LI-C7-3HE
LI-C8-3HE
LI-C9-3HE
LI-C10-3HE
LI-C11-3HE
LI-C12-3HE
LI-C13-3HE
LI-C14-3HE
LI-C15-3HE
LI-C16-3HE
LI-C17-3HE
LI-C18-3HE
LI-C19-3HE
LI-C20-3HE
LI-C21-3HE
LI-C22-3HE
LI-C23-3HE
LI-C24-3HE
LI-C25-3HE
LI-C26-3HE
LI-C27-3HE
LI-C28-3HE
LI-C29-3HE
LI-C30-3HE
LI-C31-3HE
LI-C32-3HE
LI-C33-3HE
LI-C34-3HE
LI-C35-3HE





HOOD & VENTILATION ACCESSORIES

ELECTRICAL BOX (SINGLE PHASE)	
Electrical Packages (Wall Mount)	
MODEL #	DESCRIPTION
Elec. System #1	1 Phase 115 Volt
Additional Charge	2.0 HP and Above

ELECTRICAL BOX (THREE PHASE)	
Electrical Packages (Wall Mount)	
MODEL #	DESCRIPTION
Elec. System #2	3 Phase 208 Volt

ANSUL FIRE BOX	
Fire Systems (Wall Mount)	
MODEL #	DESCRIPTION
Ansul - 1.5	Fire System #1
Ansul - 3.0	Fire System #2
Ansul - 3.0/1.5	Fire System #3
Ansul - 3.0/3.0	Fire System #4
Ansul - 3.0/3.0/1.5	Fire System #5
Ansul - 3.0/3.0/3.0	Fire System #6

HOOD ACCESSORIES	
MODEL #	DESCRIPTION
LI-HHB	Hanger Brackets (Set-4)
LI-HDO	Hood Duct Opening
LI-HDC-3 Flanged (EXH.)	Hood Duct Collar (Sq. / Cr.)
LI-HDC-3 Straight (SUP.)	Hood Duct Collar (Sq.)
LI-SSAS-R-3	Air Space Rear (per ft.)
LI-SSAS-E-3	Air Space Ends (per ft.)
434680600587XL - 1.5"x24"x25'	Duct Wrap
TAPE-ALUMFOIL - 3"x150'	Alum. Foil Tape Roll
BANDING.5-DUCT - .5"x200'	S/S Duct Banding
SEAL.5-DUCT - .5"	S/S Banding Seals
3M15A2 - 1.5"x24"x20'	Duct Wrap
3M15A4 - 1.5"x48"x20'	Duct Wrap
3M20A2 - 2"x24"x20'	Duct Wrap
3M20A4 - 2"x48"x20'	Duct Wrap
J63-1451-8	Cap Strips 96"
J64-1450-8	Divider Bars 96"
J63-1651-78	(78" S/S Cap Strip) - S/S
J63-1651-120	(120" S/S Cap Strip) - S/S
J64-1651-78	(78" S/S Divider Bar) - S/S
J64-1651-120	(120" S/S Divider Bar) - S/S
ACC-10X6-6	Access Door w/6" bolt 10x6
ACC-12X8-6	Access Door w/6" bolt 12x8
ACC-10X6	Access Door 10x6
ACC-12X8	Access Door 12x8
ACC-18X14	Access Door 18x14
ACC-10X6-3M1-1	1.5" Wrap Access Door Single L.
ACC-10X6-3M1-2	1.5" Wrap Access Door Double L.
ACC-12X8-3M1-1	1.5" Wrap Access Door Single L.

ACC-12X8-3M1-2	1.5" Wrap Access Door Double L.
ACC-10X6 3M2-2	2" Wrap Access Door Double L.
ACC-12X8-3M2-2	2" Wrap Access Door Double L.
F15-0019	Grease Cup S/S
L55-2004	Vapor Light / Casing

VENTILATION ACCESSORIES	
MODEL #	DESCRIPTION
SINGLE PHASE	
HINGE KIT (FAN # 1-21)	1P - Upblast Fans
HINGE KIT (FAN # 22-23)	1P - Upblast Fans
GREASE CUP	Upblast Fans
THREE PHASE	
HINGE KIT (FAN # 1-21)	3P - Upblast Fans
HINGE KIT (FAN # 22-23)	3P - Upblast Fans
GREASE CUP	Upblast Fans
SINGLE PHASE	
HINGE KIT (FAN # 1-35)	1P - Downblast Fans
HD HINGE KIT (FAN # 36-41)	1P - Downblast Fans
THREE PHASE	
HINGE KIT (FAN # 1-17)	3P - Downblast Fans
HD HINGE KIT (FAN # 18-23)	3P - Downblast Fans

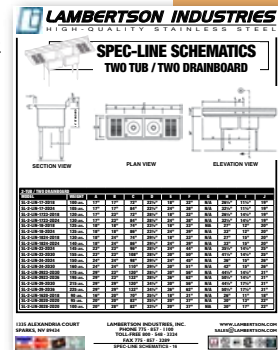
ALUMINUM BAFFLE FILTERS		
MODEL #	HEIGHT	WIDTH
FA30-1016-HD	10"	16"
FA30-1216-HD	12"	16"
FA30-1616-HD	16"	16"
FA30-2016-HD	20"	16"
FA30-1020-HD	10"	20"
FA30-1220-HD	12"	20"
FA30-1620-HD	16"	20"
FA30-2020-HD	20"	20"
FA30-2520-HD	25"	20"
FA30-1625-HD	16"	25"
FA30-2025-HD	20"	25"

STAINLESS BAFFLE FILTERS		
MODEL #	HEIGHT	WIDTH
FS30-1016-HD	10"	16"
FS30-1216-HD	12"	16"
FS30-1616-HD	16"	16"
FS30-2016-HD	20"	16"
FS30-1020-HD	10"	20"
FS30-1220-HD	12"	20"
FS30-1620-HD	16"	20"
FS30-2020-HD	20"	20"
FS30-2520-HD	25"	20"
FS30-1625-HD	16"	25"
FS30-2025-HD	20"	25"



Now Lambertson Industries is always at your fingertips...

Download product schematics and spec sheets.



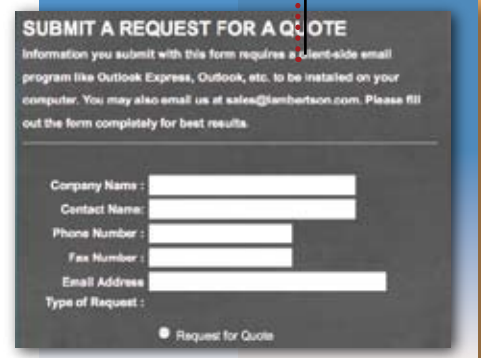
Product listing, information, schematics, and list price are now on-line at www.lambertson.com



Find standard items fast from the home page and on every page you search.



Connect direct to kenrickstainless.com from the Lambertson Industries home page.



Save time by sending your quote request by e-mail from the web site.

Please visit www.lambertson.com
Please visit www.kenrickstainless.com